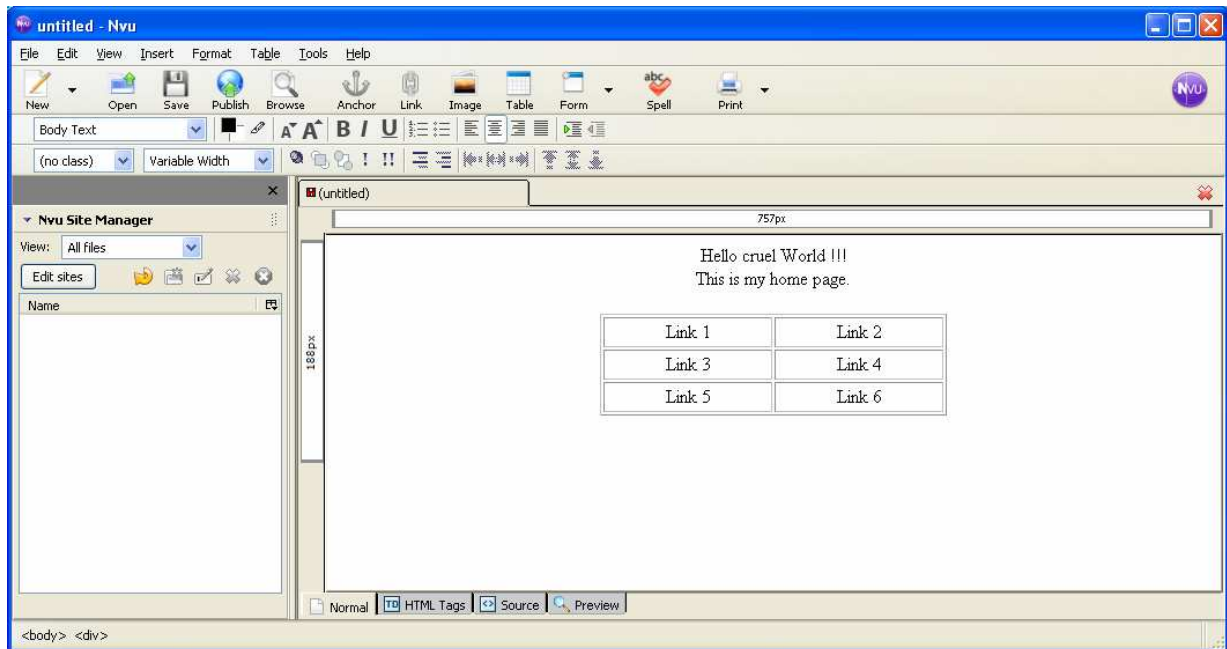


SHORT NVU (N-view) MANUAL

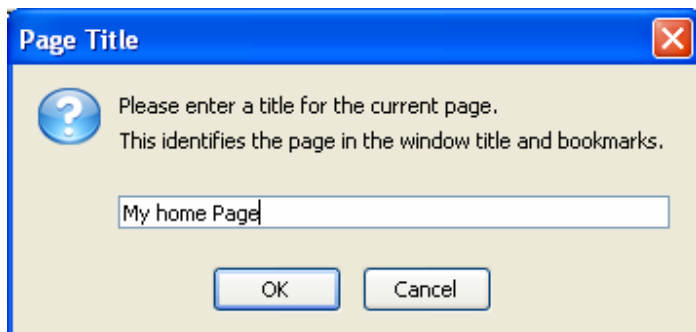
1. Create your homepage
2. Insert images
3. Create other pages
4. Insert links

Create your home page

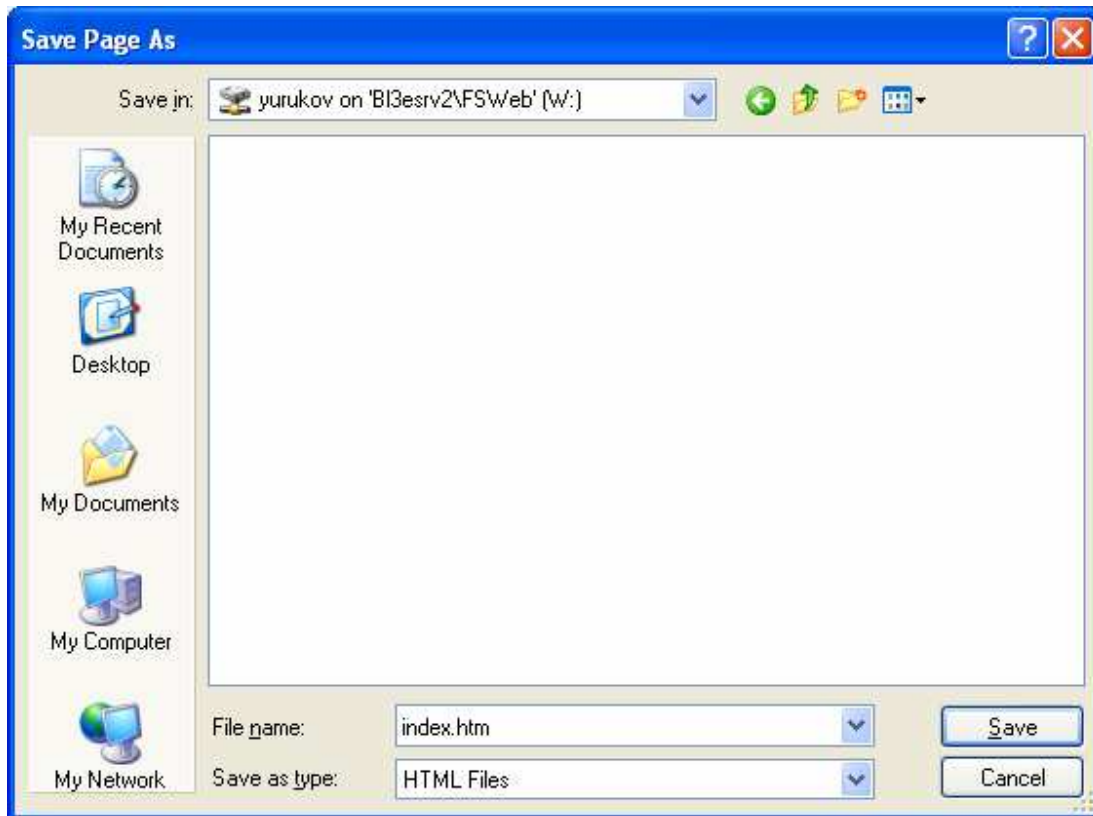
Run the HTML editor program Nvu from Start -> Programs -> Nvu. You have a new page. Format your home page by inserting text and other objects.



When you try to save the document, you will be prompted for document title:



Then save the document under the name **index.htm** in **W:** directory.

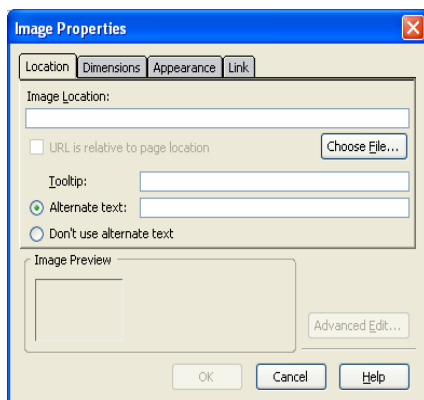


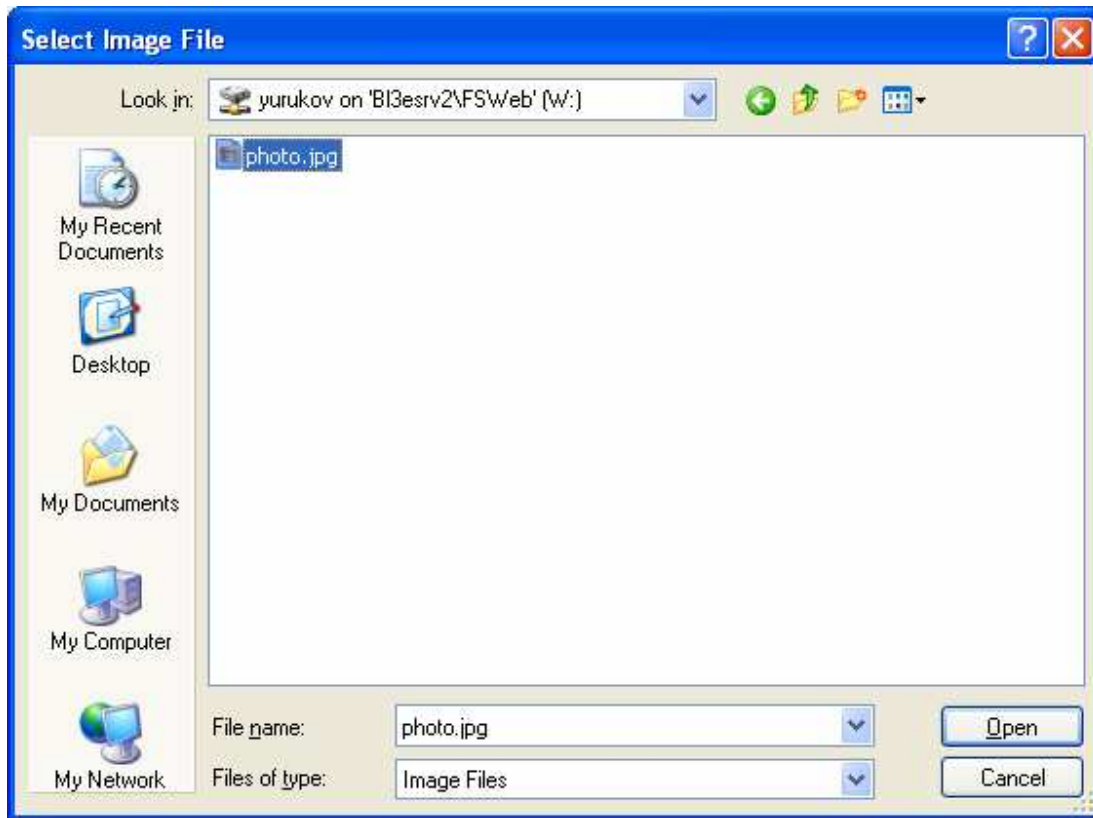
Suppose my user name is „yurukov”. All in my **W:** drive can be found on my personal home page here:

<http://home.aubg.bg/faculty/yurukov/>

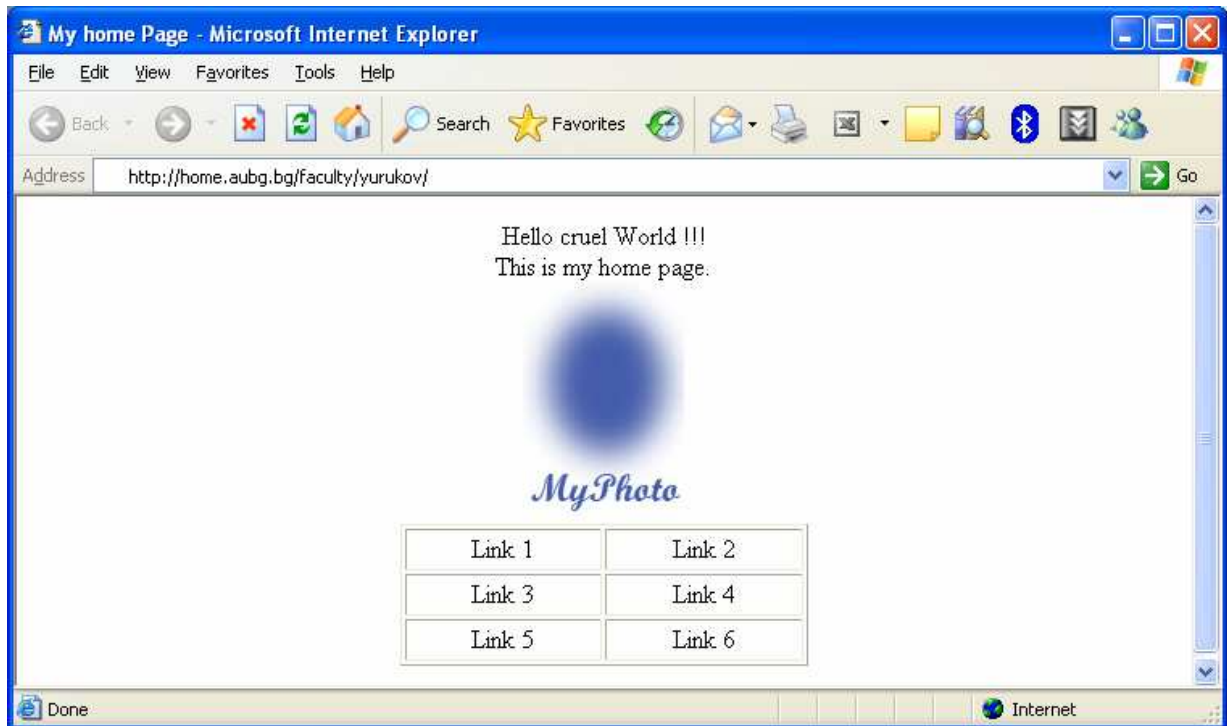
Insert images

I have a picture **photo.jpg** that I want to place on my home page. First I place the picture on **W:** drive (must be accessible). Then in Nvu do “Insert” -> ”Picture” -> “Choose File...” I choose **photo.jpg** from **W:** drive. Then make sure that the checkbox “URL is relative to page location” is ON and radio button is on “Don't use alternate text”.



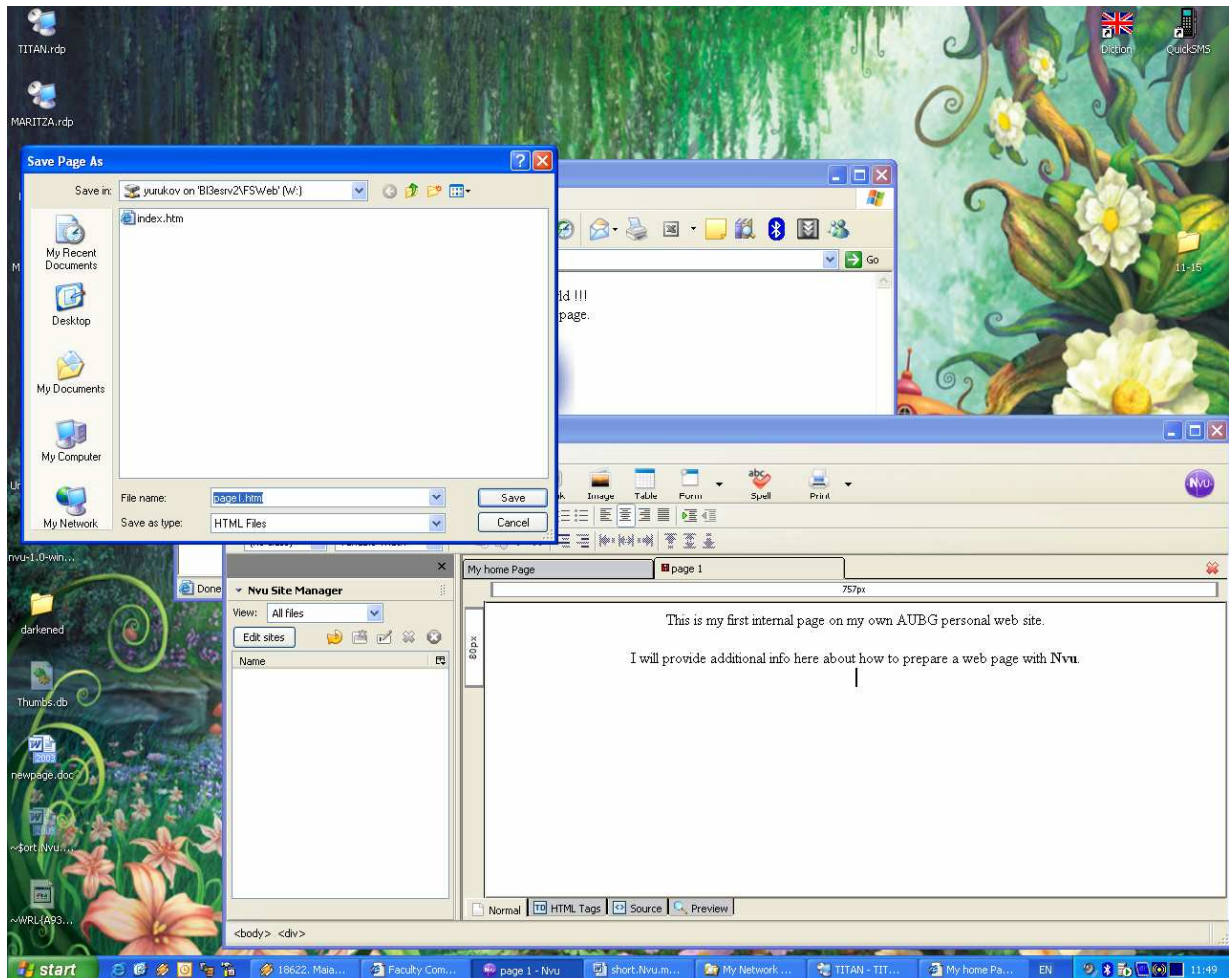


The result is:



Create other pages

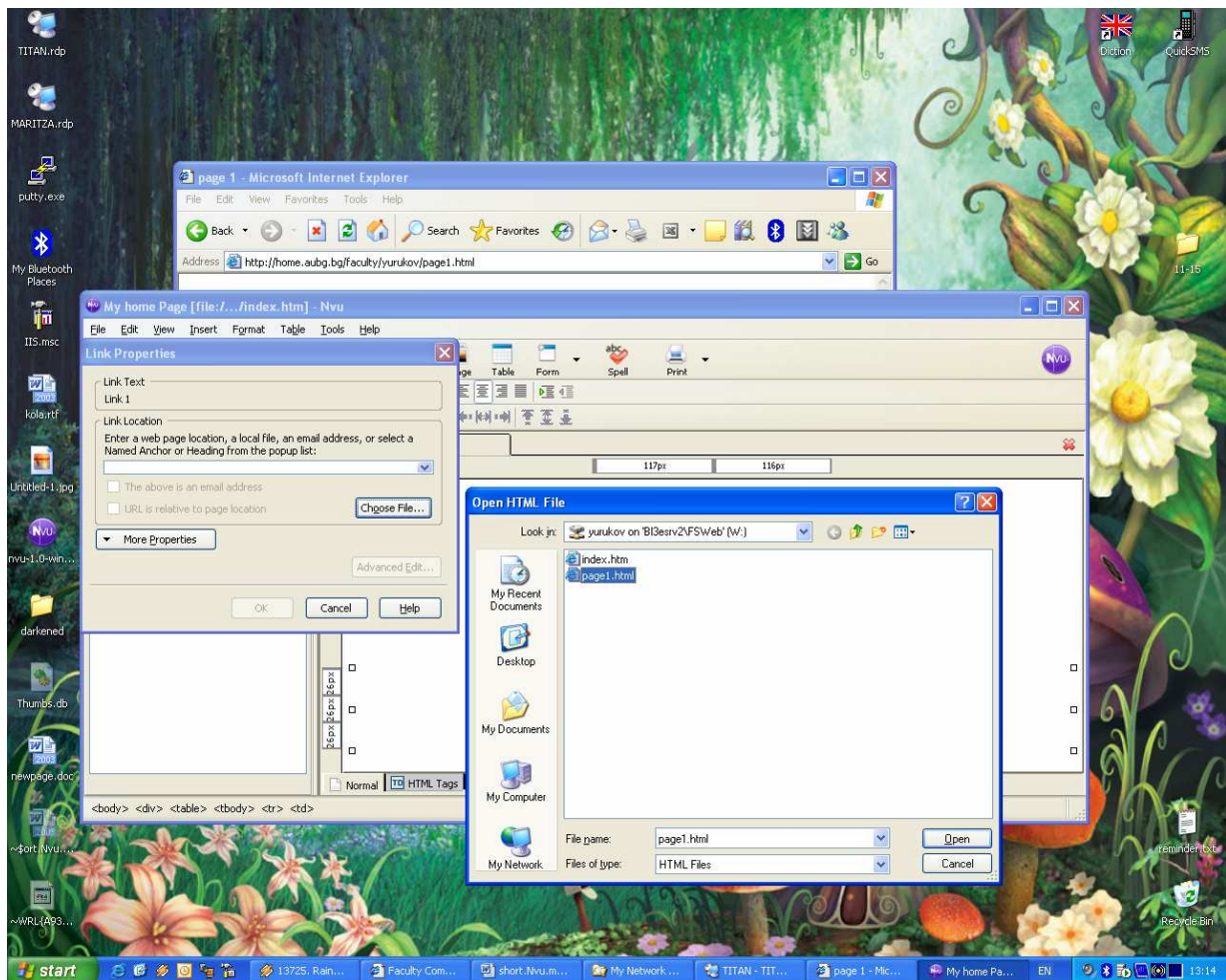
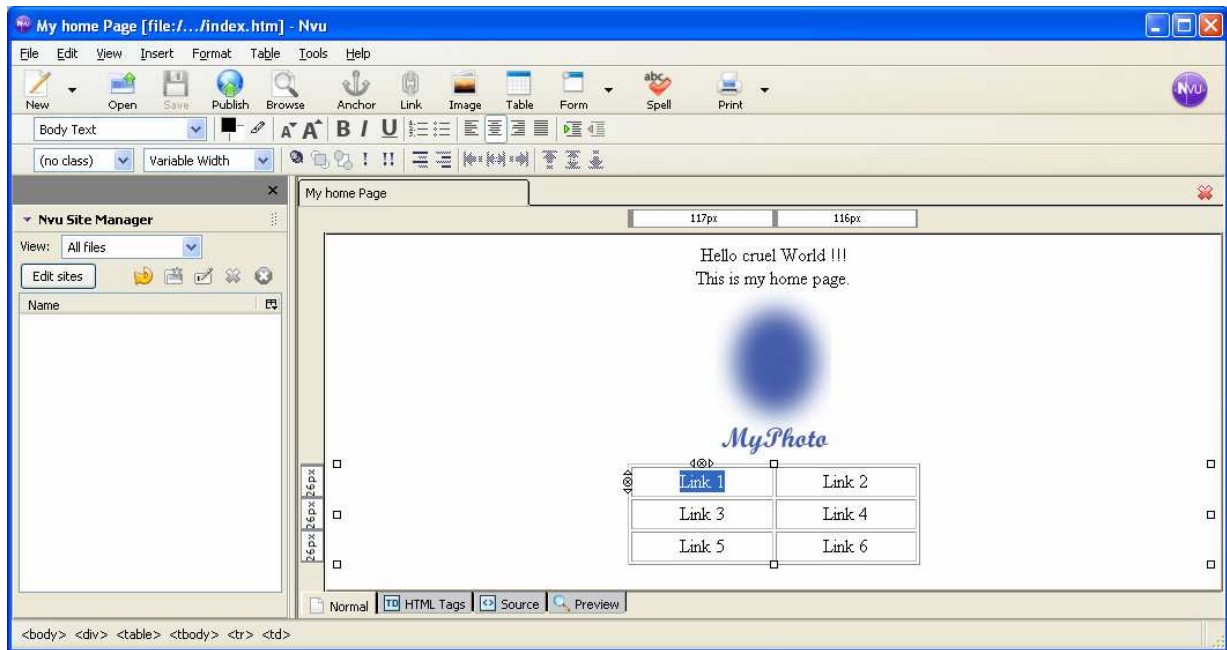
In Nvu choose “File” -> “New”. Edit the content of the page and save it under the name **page1.html** in your **W:** drive.



This document can be found at <http://home.aubg.bg/faculty/yurukov/page1.html>

Insert links

Last of the basic operations with web documents is how to link one document to other. We have two documents. **index.htm** and **page1.html**. We will open the first one from “File” -> “Open” and then choose **index.htm**. Select some text as it is shown on next picture and then choose “Insert” -> “Link” then “Choose File...” select **page1.html**



Now we have "Link 1" (selected text) pointing to **page1.html**